



# Newsletter

<http://www.intsl.com/hills>

Autumn 2005

## Residents fight to stop Foresters' late hours

Residents in the Baldwins Hill Conservation are still awaiting news on whether the Punch Taverns-owned Foresters Arms will be allowed to stay open after midnight and have live music at all hours.

But Conservation Area residents may take some heart from council reactions following objections to similar plans at the Victoria Tavern at the other end of Loughton. Residents around the Smarts Lane pub achieved 100 signatures and used the Human Rights Act to reign in Punch Taverns, who own both pubs.

Feelings are running high in Baldwins Hill. As one resident (who preferred to remain unnamed) put it: "This could be an absolute disaster for us".

The application has been made under the government's controversial new 24-hour drink laws and, unless refused, the Foresters will be able to open until midnight and after and stage performances of rock, jazz and other bands. Hills Committee have objected: Page 3.



...but thank you...

...to the two York Hill pubs, The Gardeners (below) at the top and The Wheatsheaf at the bottom, who have not applied.



### And more inside...

<i>Just a little thought for the neighbours...</i>	2
<i>Epping Forest—we're lucky to have it</i>	2
<i>Planning Update</i>	3
<i>Resident objects to council planning "farce"</i>	3
<i>Peter Smith resigns as chairman</i>	4
<i>Pressure for yellow lines at Staples Road junction</i>	4
<i>The amazing Jacob Epstein—a Hills celeb</i>	5

### Hills Autumn Lunch

and result of

### Garden Competition

come and join us on

**Saturday 5 November**

**from midday to 2pm**

**at 2 Potters Close**

(off York Hill)

to include food and a glass of wine

**£5—pay at the door**

### Open Meeting

to discuss the setting up of

### A Neighbourhood Watch Scheme

to crack down on vandalism and crime

**Thursday 10 November**

Gardeners' Arms 7.30 pm

Guest speaker will be a senior Police officer

## Epping Forest...we're lucky to have it

Extract from an article compiled by **Matthew Geyman** on the **Hills Amenity Website**  
<http://www.epping-forest.co.uk/>

During 1851 the 'Office of Woods and Forests', endorsed by the House of Commons, recommended the complete destruction of the woodlands of Hainault to the east of the River Roding for use mainly as arable land. This was during a drive to increase the value of the Crown's land by making 'waste land' cultivatable. Within six weeks, a period of time short enough to prevent effective public protest, steam ploughs anchored in the rich earth had ripped out the roots of the entire forest, including the famous ancient 'Fairlop Oak'.

Epping Forest narrowly missed a similar fate. Commissioners for the Crown offered rights for sale at £5 an acre which effectively gave 18 local lords of manors the right to 'enclose' areas of the forest for their private usage. By 1870, half of the forest's 6000 acres were surrounded by fences and development had begun in many parts.

### Local Resistance

The enclosures were widely despised and the first of many recorded acts of resistance in this time was in 1866 by a labourer named Thomas Willingale. Willingale asserted his right to continue lopping trees, as had his ancestors, in Loughton Manor; despite a ring fence erected by the local lord preventing it. Willingale was convicted of theft, but The Commons Preservation Society supported his case and the publicity from legal actions in support of the practice further generated public interest. Willingale died before the case was concluded.

The 'Forest Fund Committee' gained support of the Corporation of London, which owned 200 acres of land which included Wanstead cemetery. This ownership gave them commoner status and rights, meaning that they were able to take up the public's cause in the courts.



*Thomas Willingale—catalyst for saving Epping Forest*

In November 1874, the Master of the Rolls upheld the Corporation of London's action in a judgement which was thorough enough to be beyond dispute. The rights were judged to be of such antiquity that even if the majority of commoners agreed to relinquish their rights, a single opposing view would veto the decision. The enclosures were proved illegal, no appeal was brought and the forest was secured for the public. In 1878 the 'Epping Forest Act' was passed and the Corporation were appointed as Conservators of the 5542 acre forest. Ownership of the deer was granted to them and the commoners' rights were preserved. Compensation was given to the lords of the manors and where property had been built, an agreed area was allowed to be retained at a price—of which there are prominent examples along the forest edge of the York Hill and Baldwins Hill conservation areas.

## 'Beware the blight of the wheelies' warns resident



A York Hill resident has written to Epping Forest District Council warning of the blight the awaited wheelie bins will cause to the Conservation Areas. In a letter copied to the Hills chairman, Nick Davie writes:

"Clearly it is going to be jolly difficult for some residents to store these new bins out of sight of both the street and their neighbours. I can't see how residents at the top of York Hill and in the terraced houses of Staples Road will have much option than to store the bins in their front gardens.

"However for many other houses it should be possible to keep them out of sight. EFDC have sent me their standard answer: I hardly think using black sticky back plastic to disguise the bin will be of value and I think the Hills Society should think about issuing guidance to residents about this."

*Good idea: see below advice by Councillor Chris Pond when he was deputy-chairman of the Hills. Ed.*

### Do's and don'ts for good Hills living...

Do not keep **dustbins, wheelie bins and rubbish sacks** in front gardens

Never leave **rubbish, builders' rubble or lumber** on your frontage and if any is dumped in communal areas, call Epping Forest District Council on 01992 564000 x3050) to have it removed.

To have **graffiti** removed call 01992 564272.

Defects in **pavements or street furniture** should be reported to EFDC on 01992 564000. The council's policy is to replace defective furniture in three months.

Do not park **commercial vehicles** in the conservation area overnight or at weekends.

**Fences and hedges** are protected. If you notice hedges being uprooted or fences altered, consult the EFDC conservation officer on 01992 564119.

Do please **pick up litter**

**Park vehicles off the road** where possible

**Doors and windows** visible from roads may be protected—so ask before you ditch them.

**Plant flowers...**in front gardens, tubs and window boxes...

...and **dog owners** do please clear up afterwards.



## Residents await to hear fate on late night revels at Foresters

Hills Committee has supported objections from a local resident to an application by Punch Taverns, owners of The Foresters Public House, for longer opening hours under the Licensing Act 2003.



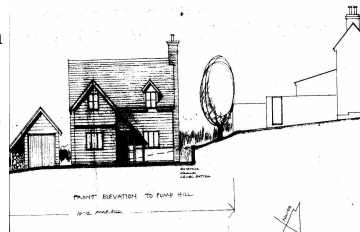
In the words of one objecting resident: "This already extended public house stands in close proximity to its neighbours in what would otherwise be a quiet, picturesque residential district, now formally designated Baldwins Hill Conservation Area." The letter points out that the pub has no adequate parking for customers and no off-street provision for delivery lorries. High levels of traffic in the area, nose to tail parking, obstruction to the footpath and road, "rubbish, disturbance, noise, car theft, vandalism and mugging" are highlighted by the resident in his letter to Epping Forest District Council. He argues that any extension to hours can only exacerbate the problems while live entertainment is something to which residents have objected on a number of occasions as "entirely inappropriate to the area."

Residents wishing to object to the proposal should write to

## Pump Hill approval "a farce"

Plans for a new development behind Pump Hill cottages were approved by Epping Forest planning committee on 10 August. A resident who attended the meeting said that two councillors were outspoken about the state of the land—one suggesting that treatment of the land amounted to vandalism and that in different circumstances action could have been taken to have this rectified.

"Other than that, it was a bit of a farce as we got the distinct impression that the councillors had already had their minds made up for them. One moment they were arguing technicalities about the finer point of other planning and tree applications and when they got onto this one, they ignored everything and just let it slide through. It was most odd.



"It really seems that being a conservation area counts for nothing, as they debated planning issues in depth when they were actually less pertinent than here, and turned down applications where the planning officer said there was no grounds to object .. but on this application, where many of the points were especially pertinent, they completely ignored it all here. It was extremely frustrating."

## Planning Update...

**10 Pump Hill**—plans to develop the corner plot of Pump Hill with Queens Road have been **approved**. The site once formed part of the garden of adjoining property but has been left derelict for many years.

**42 Baldwins Hill** – Permission has been **refused** for a substantial development, which would have included removal of several trees. The Hills had written to EFDC objecting and spoken to the planning Department about the trees.

**27-29 Staples Road** – Awaiting outcome of appeal on the third planning application to erect a two-story five bedroom house behind these two properties.

**6 Baldwins Hill**—An application has been made for a loft conversion with three dormer windows and to raise the height of the chimneys.

**11 Woodbury Hill (pictured)**—

After almost nine months of inactivity work has started again. The Council is monitoring the building to ensure plans are followed after complaints of 'stretching'.



**Tesco Express** has applied to convert the shop on the site of the Church Hill filling station into a Tesco Express. The owners and customers of the Englands Lane sub post-office and general stores, which were recently revamped, have objected.

**Marie's Path**—the right of way between the lower end of Queens Road and Church Hill, now has a permanent sign at the Queens Road end—but still no sign off Church Hill.

**13 Pump Hill**—Work is ongoing to lower the floor level and raise slightly the height of the roof to create a two storey building from the former bungalow. Dormer windows have been inserted as per the application.

**3 Woodbury Hill** - Permission has been given to fell the large Ash Tree but this will be replaced with another tree.

**96-98 York Hill** - Two ash trees have been felled due to disease and one heavily lopped tree remains. The owners have agreed to replace the tree with a mature ash "as large as site conditions allow".

## Hills committee regroups as chairman resigns

Peter Smith has resigned as chairman of the Hills Amenity Society after a three year stint in the seat.

His brief note circulated to committee members dated 19 July stated he was resigning with immediate effect and added "I would like to express my thanks for all the support I have been given whilst being involved with the

So-

ciety."

Former chairman Peter Tidmarsh has stepped back into the role for four months to be followed by Peter Wynn in December.

At a meeting of the committee at the beginning of August it was agreed that the Chairman's role would be shared and each Committee member would take his or her turn every four months. Decisions will be made on the next two Chairs after the 2006 AGM. A letter

of thanks would be sent to Peter Smith thanking him for the energetic, dedicated and committed way he had carried out his chairmanship over the three years.

The committee accepted that, as chairman, Peter Smith had carried responsibility for letter writing and had done much to influence thinking on Hills affairs both with the Town Council and Epping Forest District Council. Responsibility for letters to the councils would be shared out among the whole Committee and the onus would no longer lie just with the Chairman.

All Committee members will take more of an active role and it was therefore agreed that more roles will be created and the full Committee list is as follows: Treasurer - Amanda Gotham; Secretary - Lisa Godsolve; Planning - Brenda Harris; Member-

### Peter Smith writes:

Dear Residents, due to personal family circumstances I have decided that I am no longer able to give my full attention to the Hills Amenity Society. I have, therefore, resigned as both Chairman and also as a Committee Member.

I have enjoyed my last three years as Chairman and also prior to that as a Committee Member during which time I am pleased to report that we have increased our membership and have also increased the number of people willing to serve on the Committee. We have also had some notable success in dealing with planning matters (we have also had our failures!)

I would like to take this opportunity to thank the other Committee Members for their support. As everyone is a volunteer it does mean that they have to give up their evenings to attend meetings and it has been much appreciated.

Naturally the Hills Amenity Society will continue to have my full support and I am obviously still a member so will continue to be interested in what is happening in our area. With kind regards.

Peter E. Smith

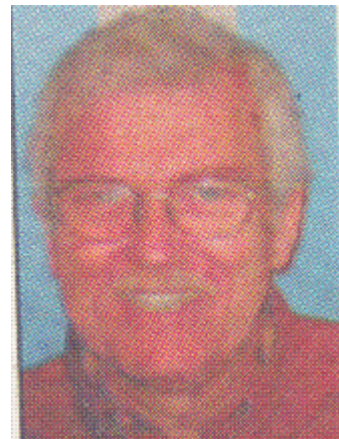
## *Pressure for yellow lines to stop parking on danger junction*

Following a series of bumps and near misses pressure is growing for double yellow lines to curb irresponsible parking on the junction of Staples Road, Queens Road and York Hill (pictured).

Hills Amenity Society is to write to Essex County Council to support the campaign.

Writes our Staples Road correspondent: "Many Hills residents will have found that the junction of York Hill, Queens Road, and Staples Road, has become quite difficult to use, and dangerous, due to the parking right up to and around the corners of the crossroads. Our county councillor Chris Pond has requested double yellow lines on all four corners to make the junction safer. This is "under investigation" by the council for 2006-07. However, money may not be available. Any representations that Hills members would like to make would add weight to the cause." The email address is [paul.hardy@essexcc.gov.uk](mailto:paul.hardy@essexcc.gov.uk).

## Hills founder member dies



Paul Bostock, who died on 19 July, was a founder member of the Hills Amenity Society. He brought up his family with his wife in Queens Road. A brief announcement in the local paper described "politics and the community" as his passion. Paul Bostock represented the wards of Broadway and Alderton as a Labour councillor from 1998 to 2004.

# Newsletter Title

<http://www.intsl.com/hills>

Autumn 2005

### **Special points of interest:**

- ?? Briefly highlight your point of interest here.
- ?? Briefly highlight your point of interest here.
- ?? Briefly highlight your point of interest here.
- ?? Briefly highlight your point of interest here.

## Lead Story Headline

This story can fit 175-225 words.

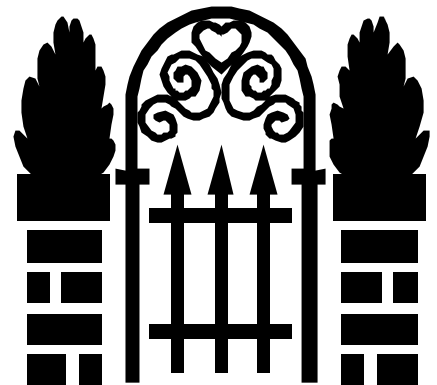
The purpose of a newsletter is to provide specialized information to a targeted audience. Newsletters can be a great way to market your product or service, and also create credibility and build your organization's identity among peers, members, employees, or vendors.

First, determine the audience of the newsletter. This could be anyone who might benefit from the information it contains, for example, employees or people interested in purchasing a product or requesting your service.

You can compile a mailing list from business reply cards, customer information sheets, business cards collected at trade shows, or membership lists. You might consider purchasing a mailing list from a company.

If you explore the Publisher catalog, you will find many publications that match the style of your newsletter.

Next, establish how much time and money you can spend on your newsletter. These factors will help determine how frequently you publish the newsletter and its length. It's recommended that you publish your newsletter at least quarterly so that it's considered a consistent source of information. Your customers or employees will look forward to its arrival.



Caption describing picture or graphic.

### **Inside this issue:**

<i>Inside Story</i>	2
<i>Inside Story</i>	2
<i>Inside Story</i>	2
<i>Inside Story</i>	3
<i>Inside Story</i>	4
<i>Inside Story</i>	5
<i>Inside Story</i>	6

## Secondary Story Headline

This story can fit 75-125 words.

Your headline is an important part of the newsletter and should be considered carefully.

In a few words, it should accurately represent the contents of the story and draw readers into the story. Develop the headline before you write the story. This way, the headline will help you keep the story focused.

Examples of possible headlines include Product Wins Industry Award, New Product Can Save You Time!, Membership Drive Exceeds Goals, and New Office Opens Near You.

# Newsletter Title

<http://www.intsl.com/hills>

Autumn 2005

### **Special points of interest:**

- ?? Briefly highlight your point of interest here.
- ?? Briefly highlight your point of interest here.
- ?? Briefly highlight your point of interest here.
- ?? Briefly highlight your point of interest here.

## Lead Story Headline

This story can fit 175-225 words.

The purpose of a newsletter is to provide specialized information to a targeted audience. Newsletters can be a great way to market your product or service, and also create credibility and build your organization's identity among peers, members, employees, or vendors.

First, determine the audience of the newsletter. This could be anyone who might benefit from the information it contains, for example, employees or people interested in purchasing a product or requesting your service.

You can compile a mailing list from business reply cards, customer information sheets, business cards collected at trade shows, or membership lists. You might consider purchasing a mailing list from a company.

If you explore the Publisher catalog, you will find many publications that match the style of your newsletter.

Next, establish how much time and money you can spend on your newsletter. These factors will help determine how frequently you publish the newsletter and its length. It's recommended that you publish your newsletter at least quarterly so that it's considered a consistent source of information. Your customers or employees will look forward to its arrival.



Caption describing picture or graphic.

### **Inside this issue:**

<i>Inside Story</i>	2
<i>Inside Story</i>	2
<i>Inside Story</i>	2
<i>Inside Story</i>	3
<i>Inside Story</i>	4
<i>Inside Story</i>	5
<i>Inside Story</i>	6

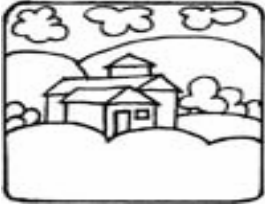
## Secondary Story Headline

This story can fit 75-125 words.

Your headline is an important part of the newsletter and should be considered carefully.

In a few words, it should accurately represent the contents of the story and draw readers into the story. Develop the headline before you write the story. This way, the headline will help you keep the story focused.

Examples of possible headlines include Product Wins Industry Award, New Product Can Save You Time!, Membership Drive Exceeds Goals, and New Office Opens Near You.



Hills Amenity Society

# **Hills Autumn Lunch**

Come and join us on

**Saturday 5 November**

**from midday to 2pm**

**at 2 Potters Close**

**(off York Hill)**

to include food and a glass  
of wine **£5**

**—pay at the door**